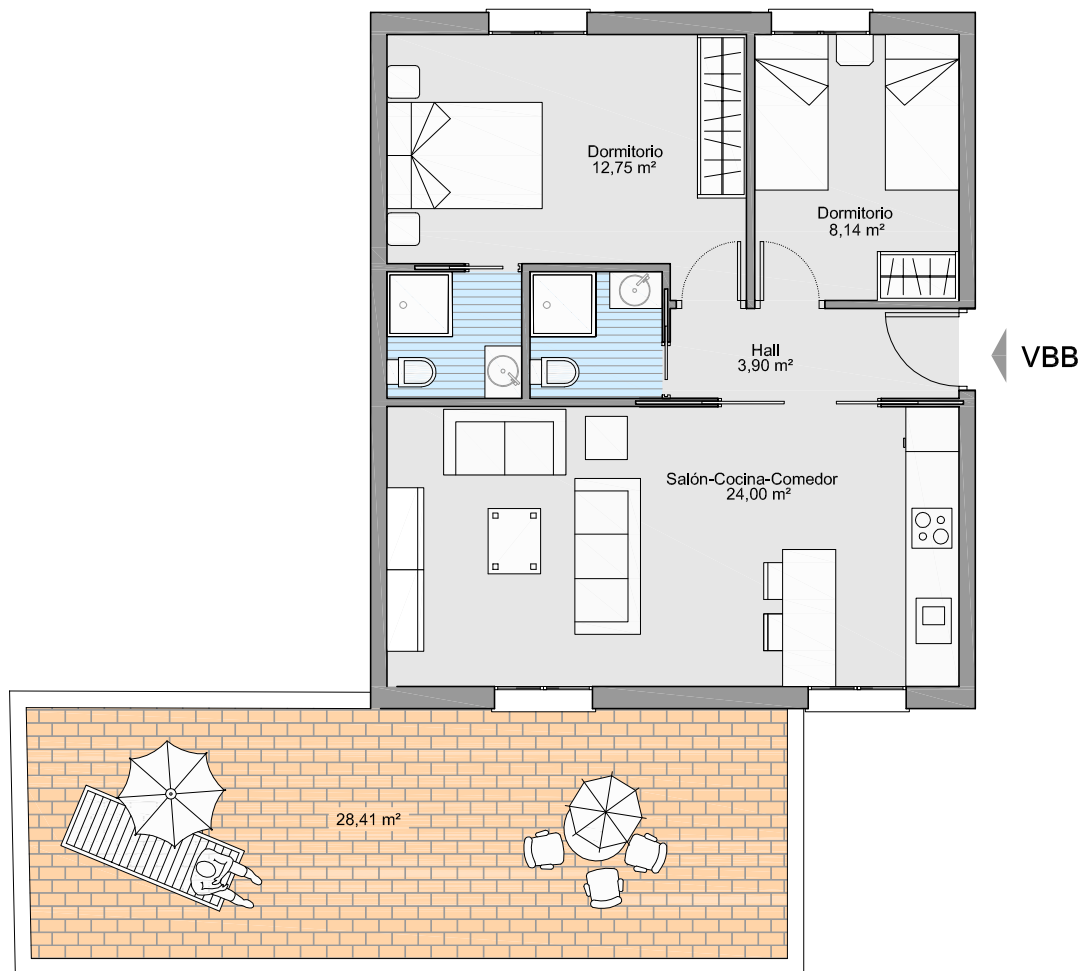


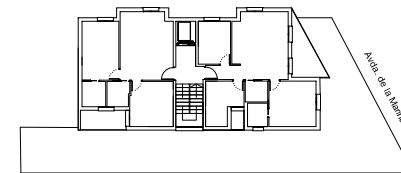
# Avda. de la MARINA - Rota

Gestiona : **gestaSUR**

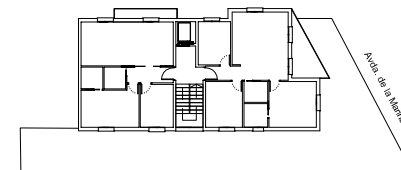
Financia : **CAJA RURAL**



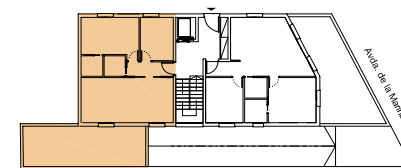
## Bajo - B -



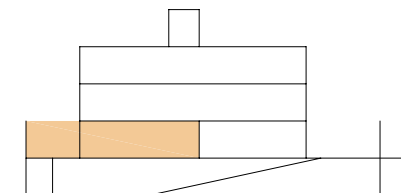
Planta 2ª



Planta 1ª



Planta Baja



## Bajo B

2 Dormitorios  
2 Baños  
Salón+Cocina+Comedor  
Terraza-Jardín

Sup. Util Total = 53,85 m<sup>2</sup>  
Sup. Terraza = 28,41 m<sup>2</sup>  
Sup. Construida ppzc = 78,41 m<sup>2</sup>