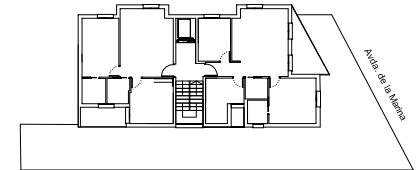
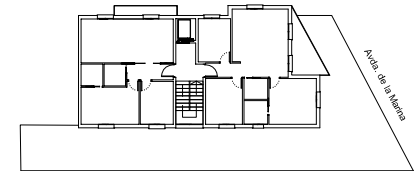


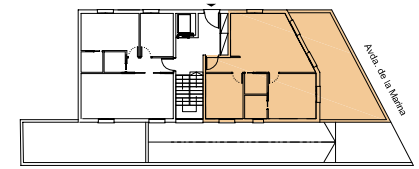
Bajo - A -



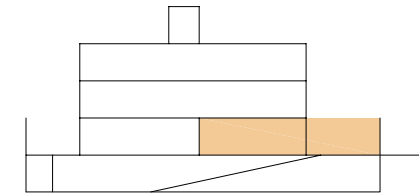
Planta 2ª



Planta 1ª



Planta Baja



Sección

Bajo A

- 2 Dormitorios
- 2 Baños
- Salón+Cocina+Comedor
- Terraza-Jardín
- Garaje+Trastero

Sup. Util Total = 53,48 m²
Sup. Terraza = 29,10 m²
Sup. Construida ppzc = 77,44 m²

