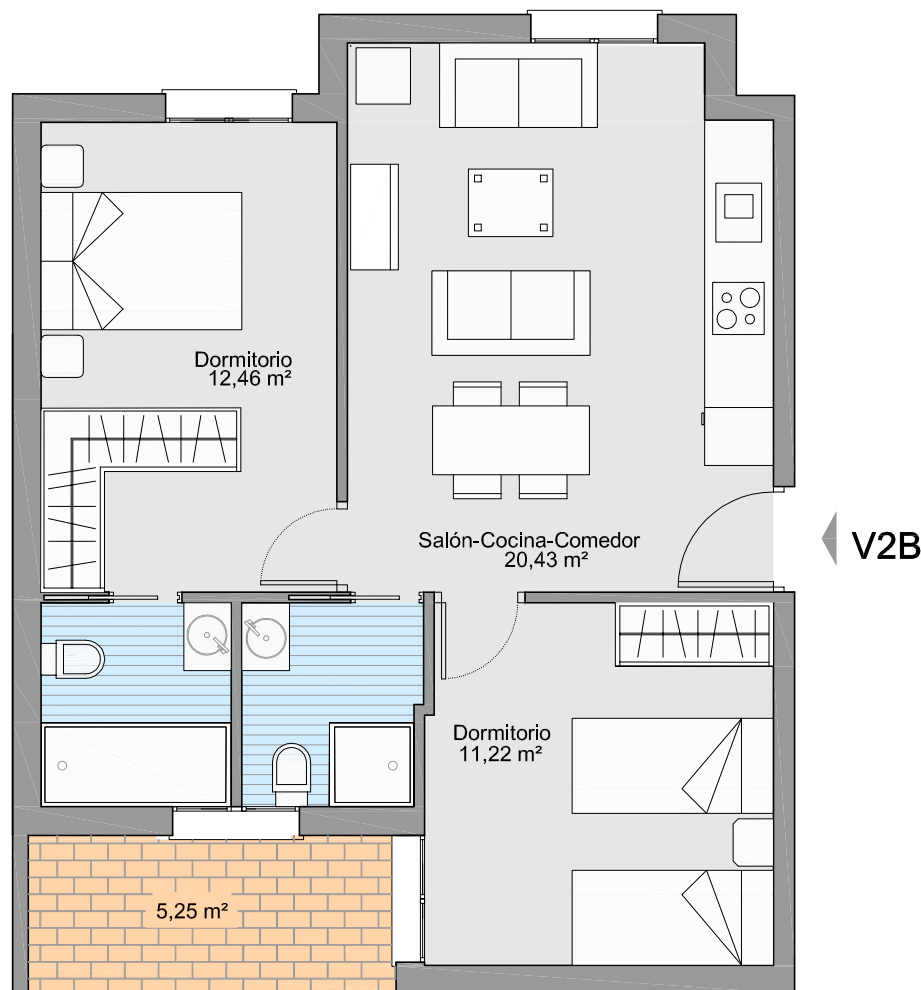


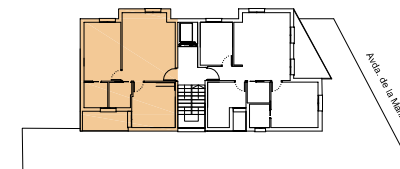
Avda. de la MARINA - Rota

Gestiona : **gestaSUR**

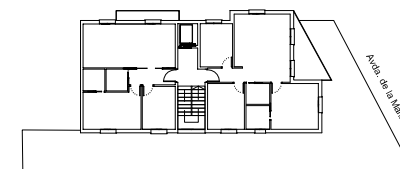
Financia :



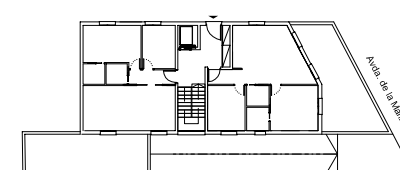
2º B



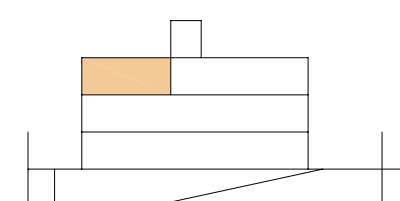
Planta 2ª



Planta 1ª



Planta Baja



Sección

2º B

2 Dormitorios
2 Baños
Salón+Cocina+Comedor
Terraza

Sup. Util Total = 50,84 m²
Sup. Terraza = 5,25 m²
Sup. Construida ppzc = 73,55 m²