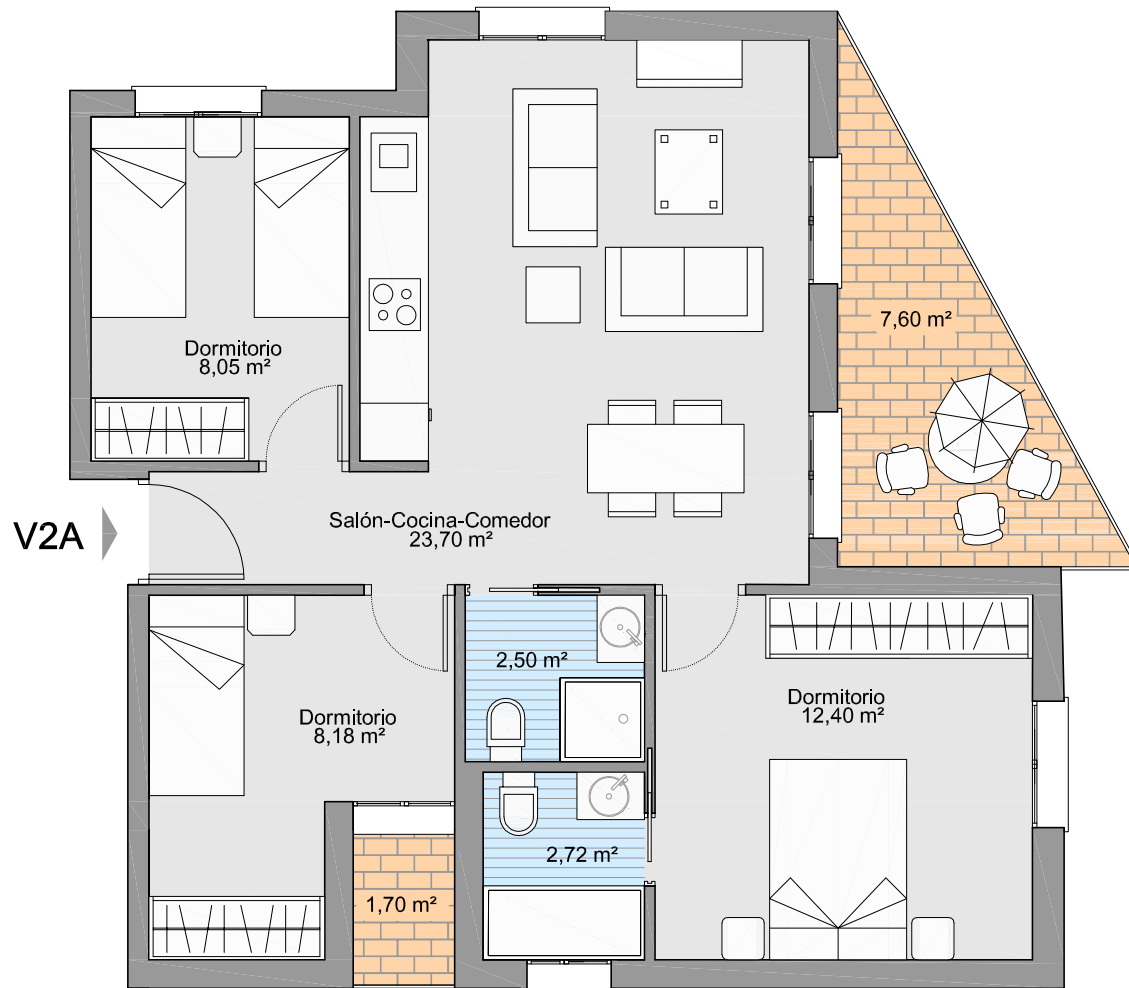


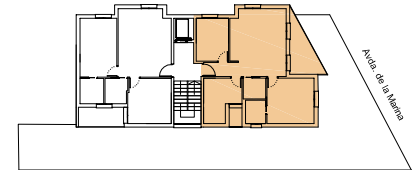
# Avda. de la MARINA - Rota

Gestiona : **gestaSUR**

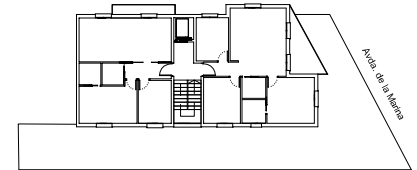
Financia : **CAJA RURAL**



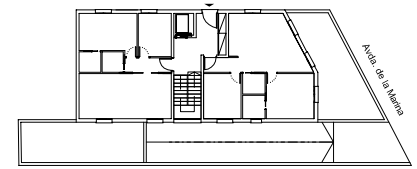
**2º A**



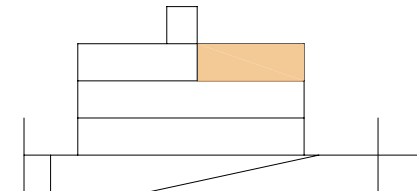
Planta 2ª



Planta 1ª



Planta Baja



Sección

**2º A**

- 3 Dormitorios
- 2 Baños
- Salón+Cocina+Comedor
- 2 Terrazas

Sup. Util Total = 57,55 m<sup>2</sup>  
Sup. Terrazas = 9,30 m<sup>2</sup>  
Sup. Construida ppzc = 83,67 m<sup>2</sup>

