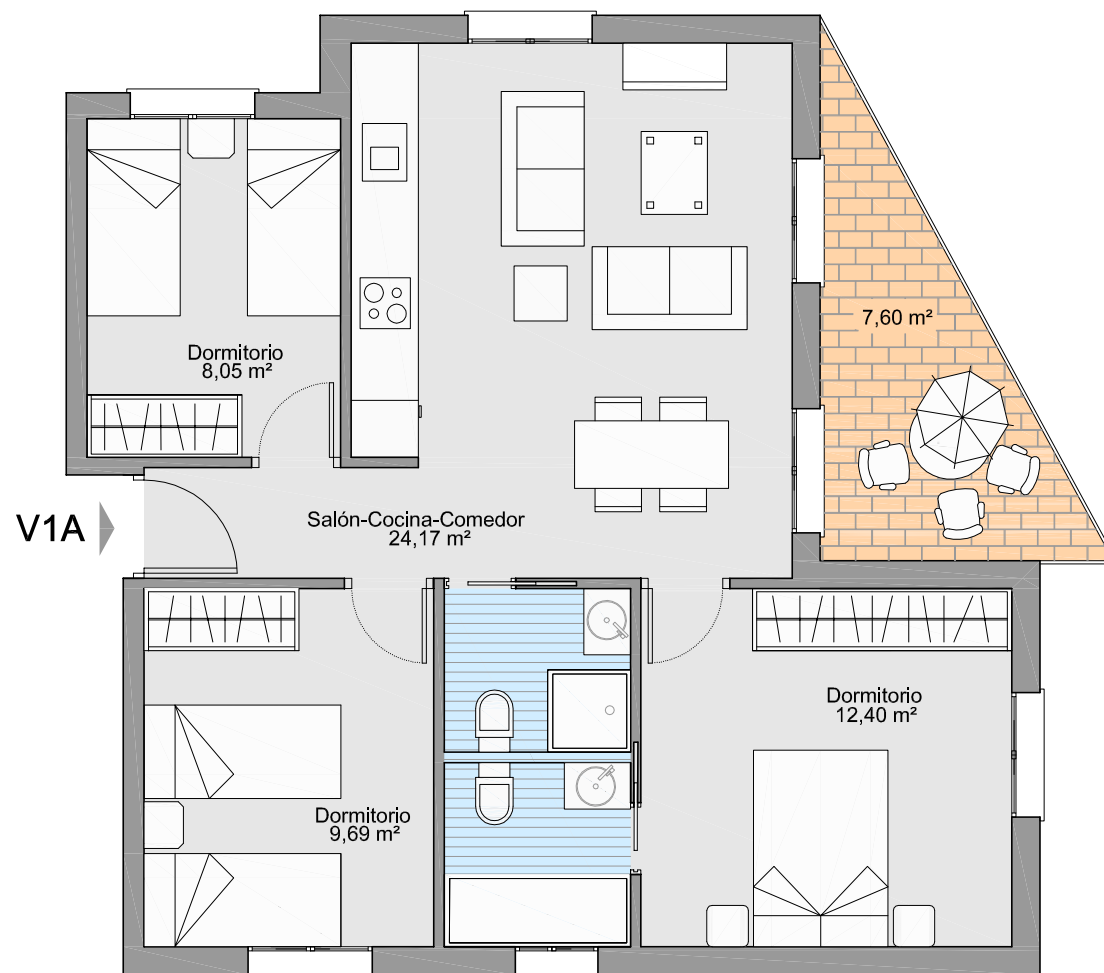


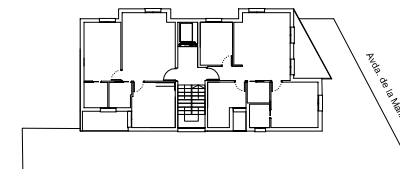
Avda. de la MARINA - Rota

Gestiona : **gestaSUR**

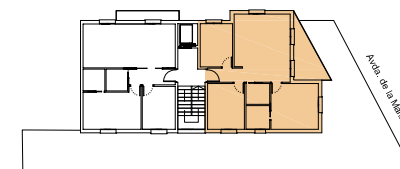
Financia :



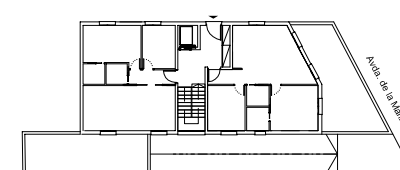
1º A



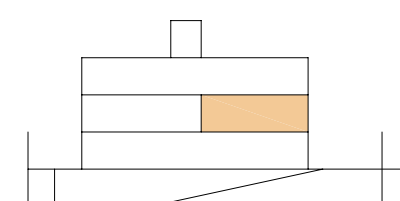
Planta 2ª



Planta 1ª



Planta Baja



Sección

1º A

3 Dormitorios
2 Baños
Salón+Cocina+Comedor
Terraza

Sup. Util Total = 60,35 m²
Sup. Terraza = 7,60 m²
Sup. Construida ppzc = 87,52 m²